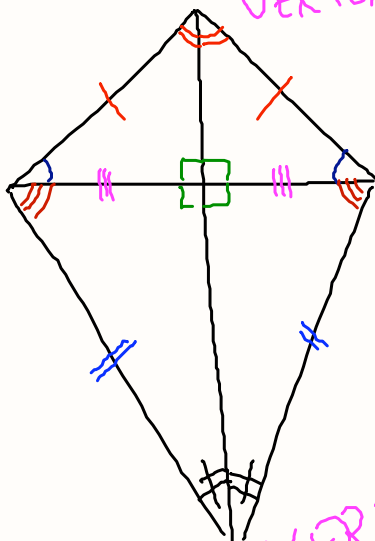


KITE

VERTEX ANGLE

NON-  
VERTEX  
ANGLE

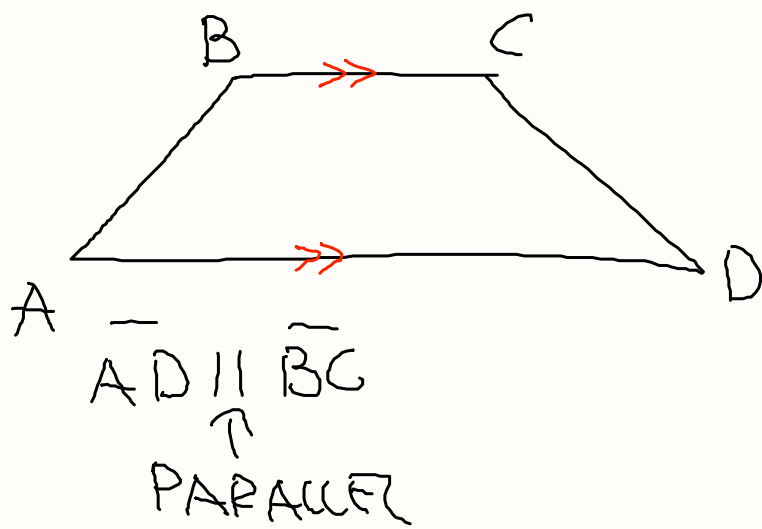


NON-VERTEX  
ANGLE

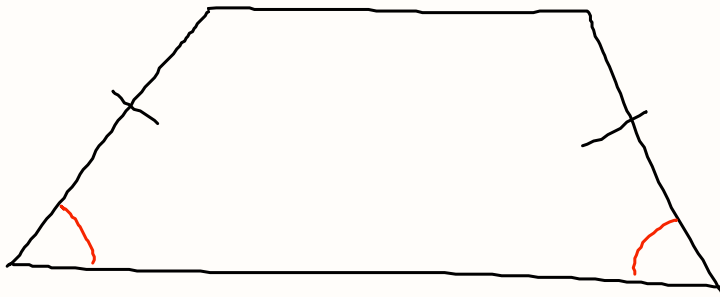
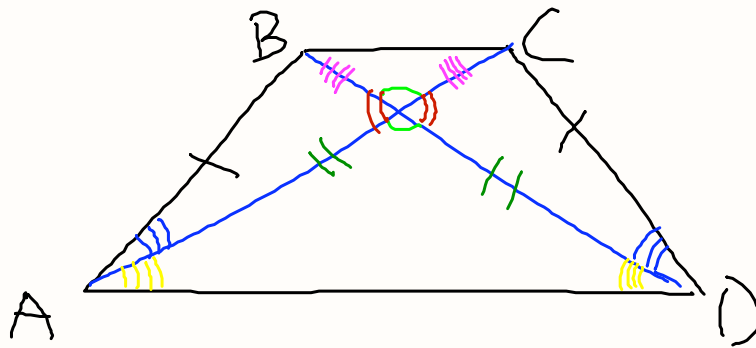
NON-VERTEX  
ANGLES  
ARE CONGRUENT

VERTEX ANGLE

## TRAPEZOID



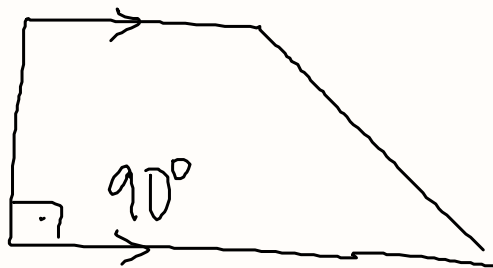
## ISOSCELES TRAPEZOID



IN ISOSCELES  
TRAPEZOID ( $AB \cong CD$ )  
1. BASE ANGLES  
ARE CONGRUENT

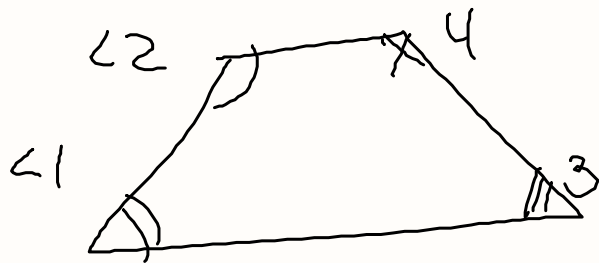
2. DIAGONALS  
ARE CONGRUENT  
ARE BISECT  
EACH OTHER

## RIGHT TRAPEZOID



---

IN EVERY TRAPEZOID  
SUM OF TWO CONSECUTIVE  
ANGLES IS  $180^\circ$



$$m\angle 1 + m\angle 2 = 180^\circ$$

$$m\angle 3 + m\angle 4 = 180^\circ$$

PRACTICE p. 269 #3  
p. 270 #4

p. 270 #6

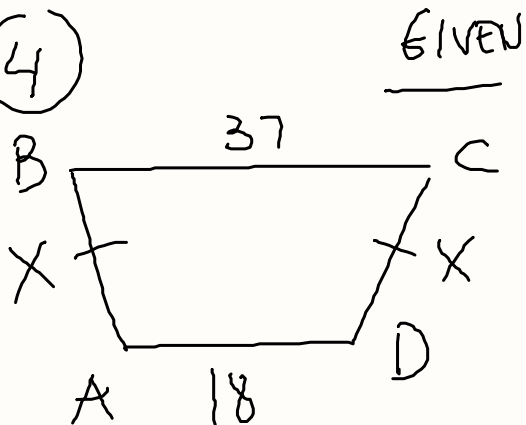
(3)



$$y = 128^\circ$$
$$x + y = 180^\circ$$

$$x = 180^\circ - y = 180^\circ - 128^\circ = 52^\circ$$

(4)



$$BC = 37 \text{ cm}$$

$$AD = 18 \text{ cm}$$

$$AB \cong CD$$

$$P = 85 \text{ cm}$$

---

$$x = ?$$

$$P = \underline{x} + \underline{37} + \underline{x} + \underline{18}$$
$$\begin{array}{r} 85 \\ - 55 \\ \hline 30 = 2x \end{array}$$
$$x = 15 \text{ cm}$$

6

